



North Central London Cardiac & Stroke Network

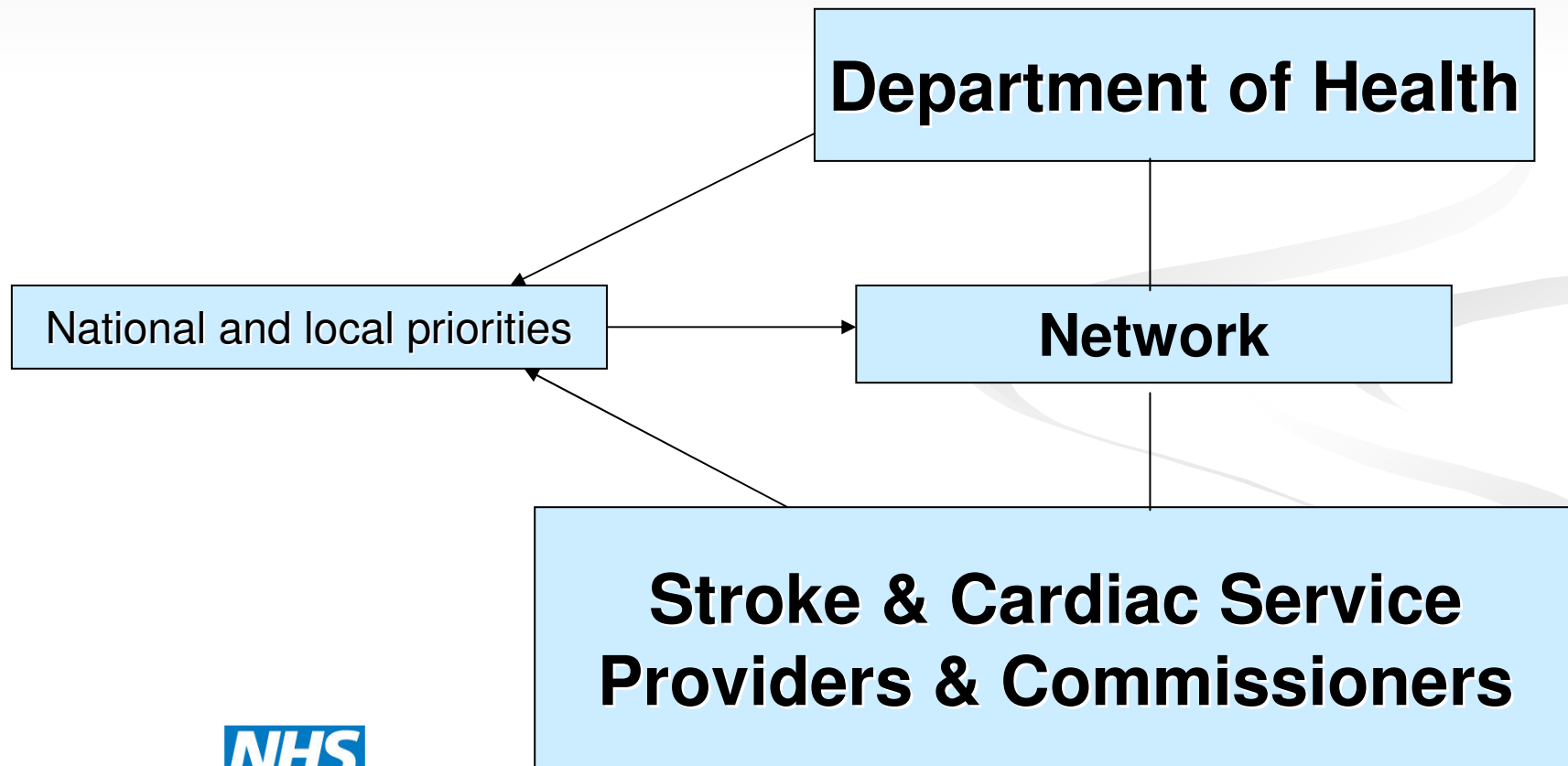
North Central London Cardiac & Stroke Network

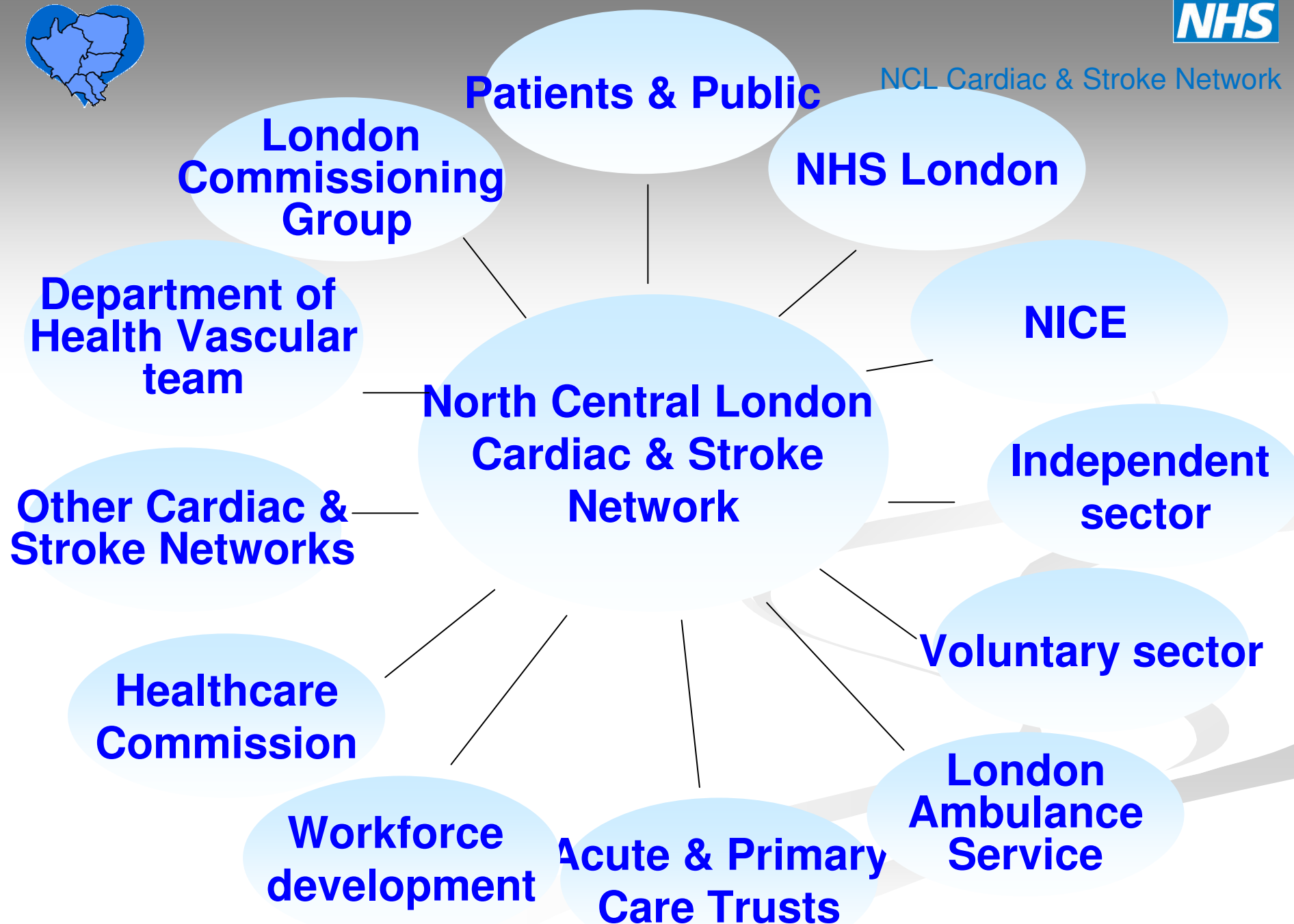
An introduction

Network Purpose

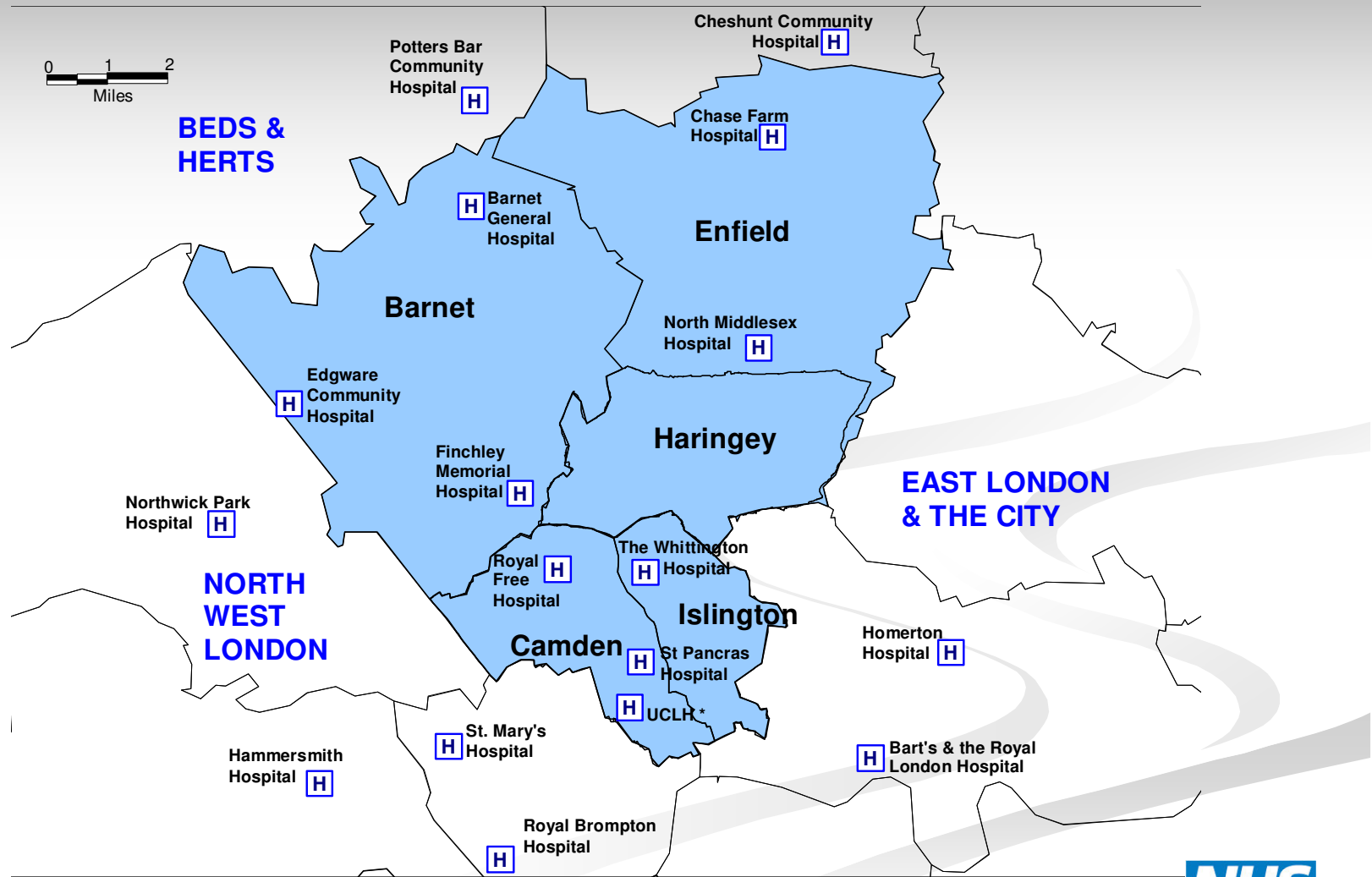
'Connections across disciplines which provide integrated care across institutional and professional boundaries, raising clinical quality and improving the patient experience'

(DoH, A network toolkit, 2004)





Geographical Area: 1.2 Million



NCLCS Network

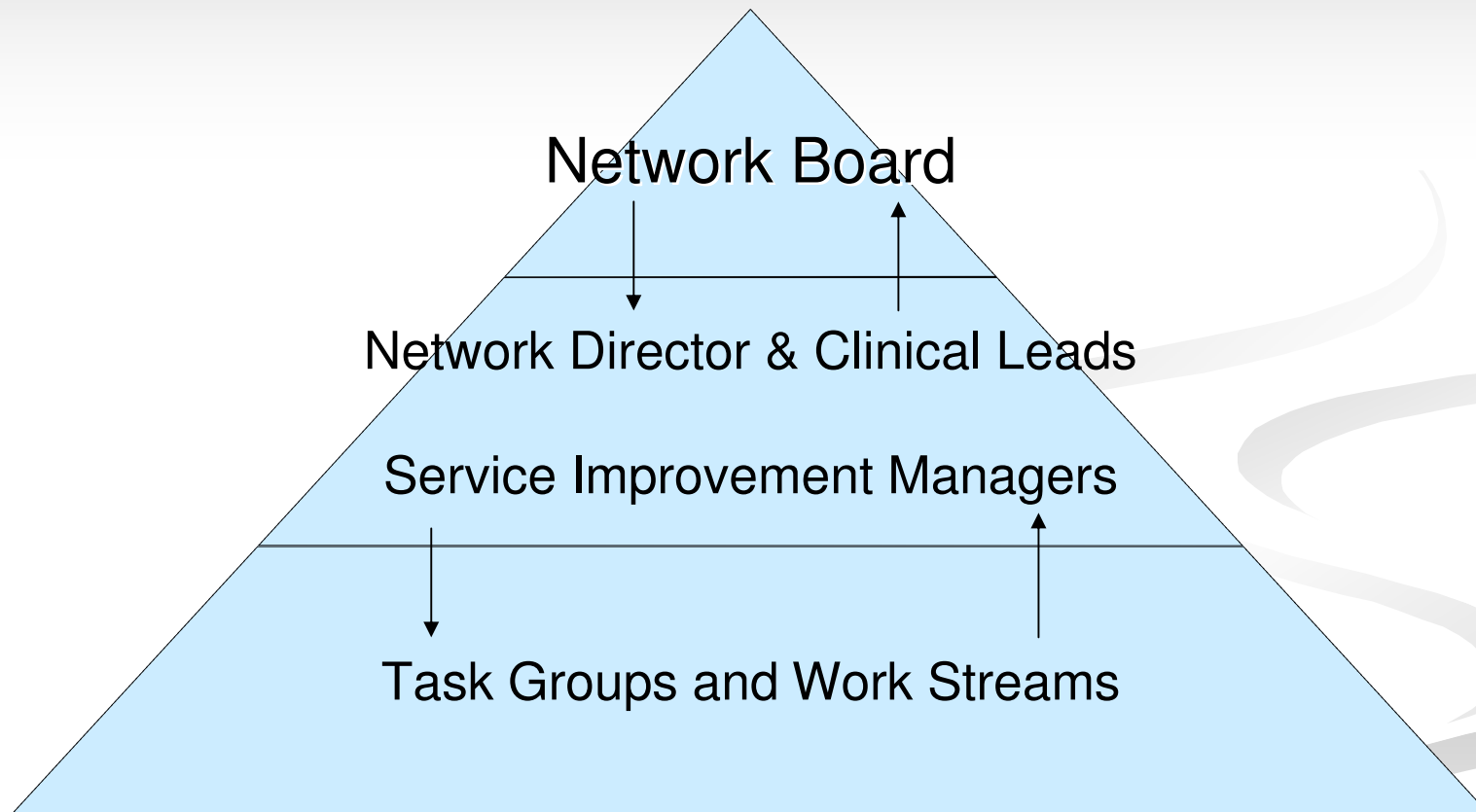
Stakeholders

- Barnet & Chase Farm Hospitals NHS Trust
 - North Middlesex University Hospital
 - The Whittington Hospital
 - Royal Free Hampstead Hospital
 - UCLH: including Queen's Square and The Heart Hospital
-
- Barnet PCT
 - Camden PCT
 - Enfield PCT
 - Haringey tPCT
 - Islington PCT



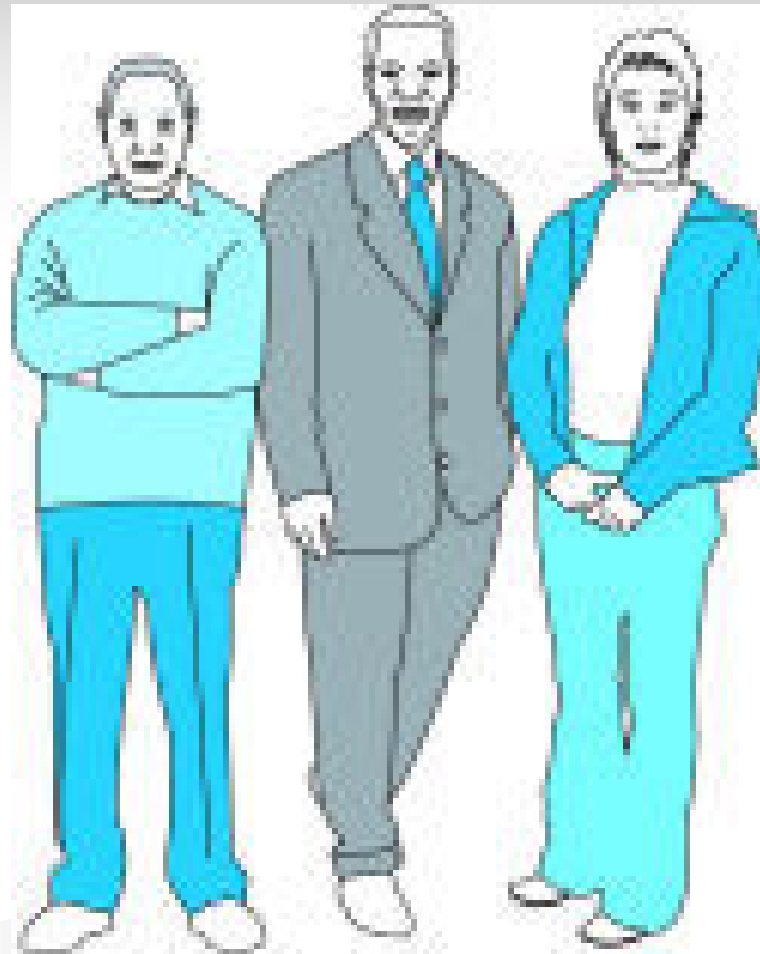
NCLCS Network

Network Structure



Task Groups

- Majority of improvements delivered through Task Groups
- Focus: Equal Access and Good Standard of Care Delivery
- Who is involved:
 - Consultant Cardiologists and Consultant Neurologists,
 - Nurses
 - Commissioners,
 - Service User,
 - Managers,
 - Public Health Professionals,
 - Joint Commissions,
 - London Ambulance Service.



Current Priorities

- Stroke – urgent care
- Life after Stroke
- Patient and Public Involvement
- 18 weeks
- Heart Rhythm Abnormalities (arrhythmia)
- Heart Failure
- CVD Prevention
- Inter-hospital Transfers

Contact Details

- North Central London Cardiac & Stroke Network

- www.nclcn.org.uk

- Network Director:

- Jinty Wilson

- Jinty.Wilson@camdenpct.nhs.uk

- 0207 530 5011



NCLCS Network